



孕龍科技股份有限公司
ZeroPlus Technology Co., Ltd.

SPECIFICATION

MODEL: B09025-LAP-WTB-M

PART NO: _____

VERSION: V1.01

Approver		Check	Design
GM	PM		

Customer Confirm

*Please fax the file to ZeroPlus Technology after signing.



Content

1	Software Download.....	3
2	Software Installation	6
3	Software Register	10
4	User Interface	13
5	Operating Instructions	16



1 Software Download

Please install the software as the following steps:

Remark: We won't have additional notice for you, when there is any modification of the module specification. If there is some unconformity caused by the module version upgrade, users should take the module software as the standard.

STEP 1. Visit the website of ZeroPlus: <http://www.zeroplus.com.tw>.

STEP 2. Click the **English** in the Instrument Division part on the Homepage.

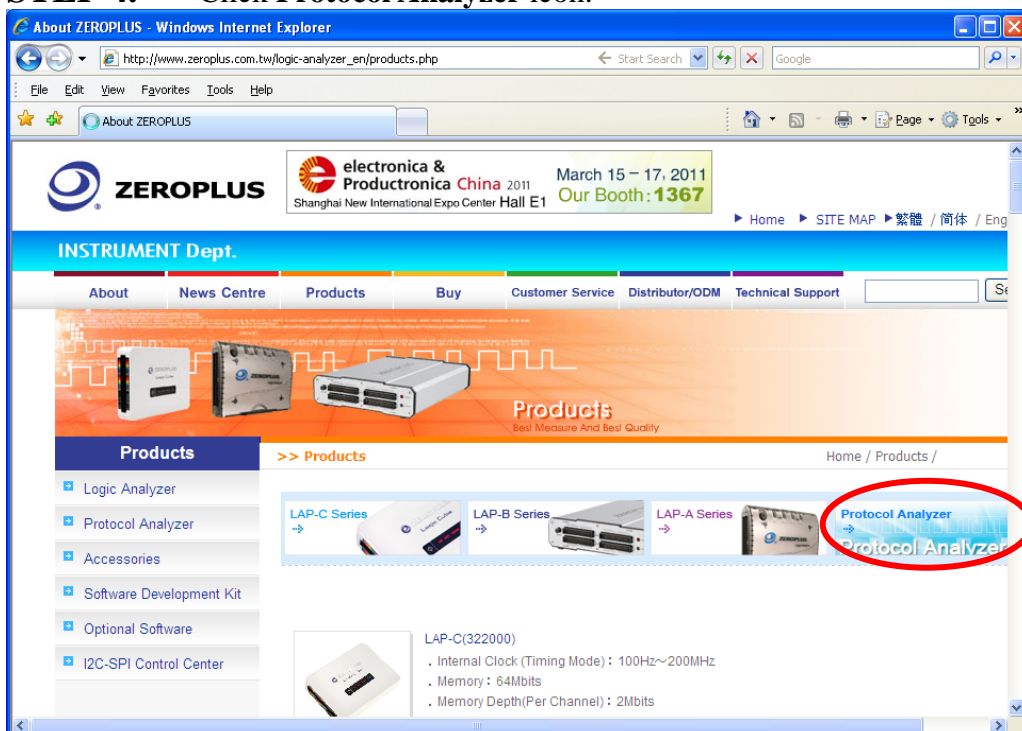




STEP 3. Click **Products** menu or select **Protocol Analyzer** item from its pull-down menu to go straight to STEP 5.

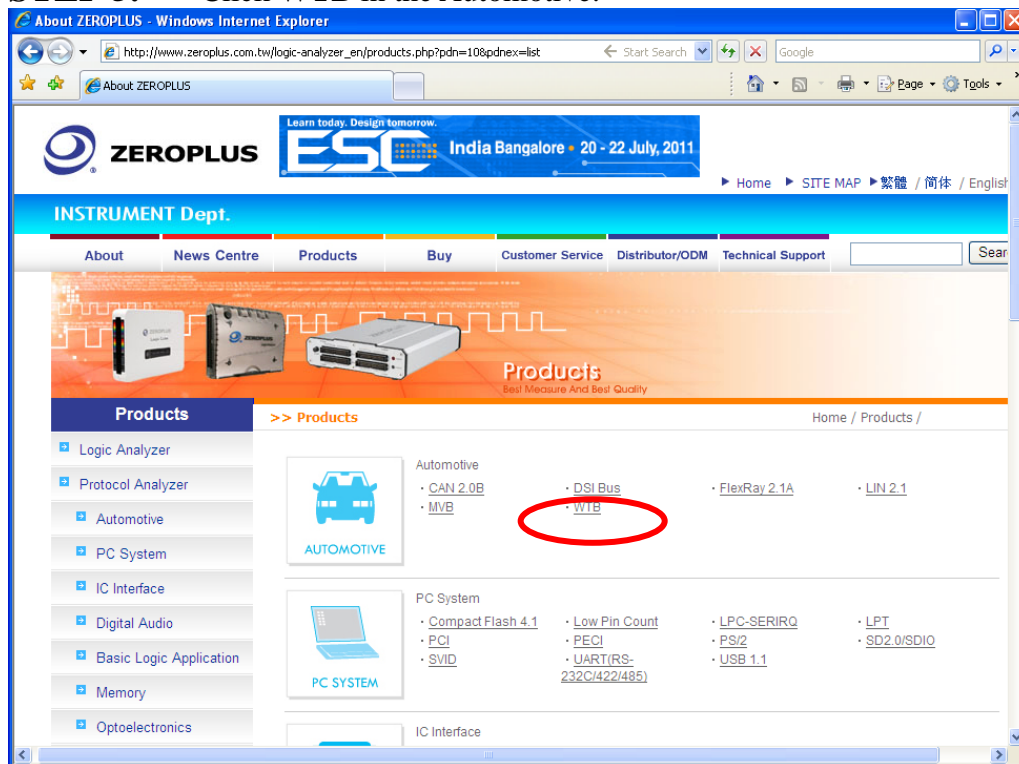


STEP 4. Click **Protocol Analyzer** icon.

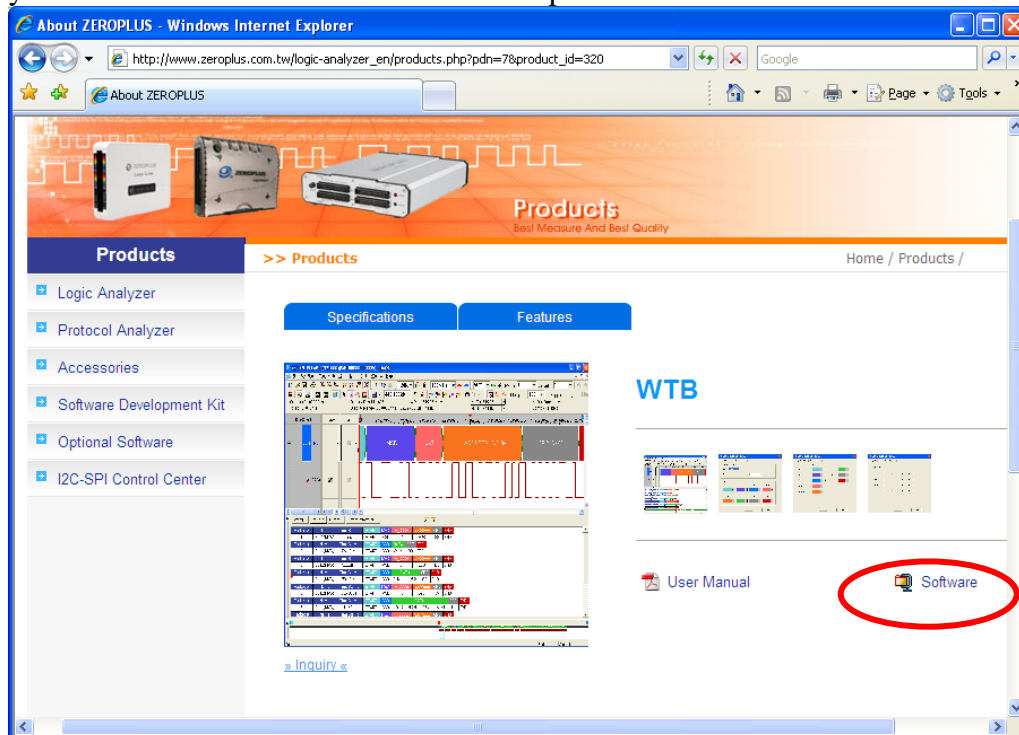




STEP 5. Click **WTB** in the Automotive.



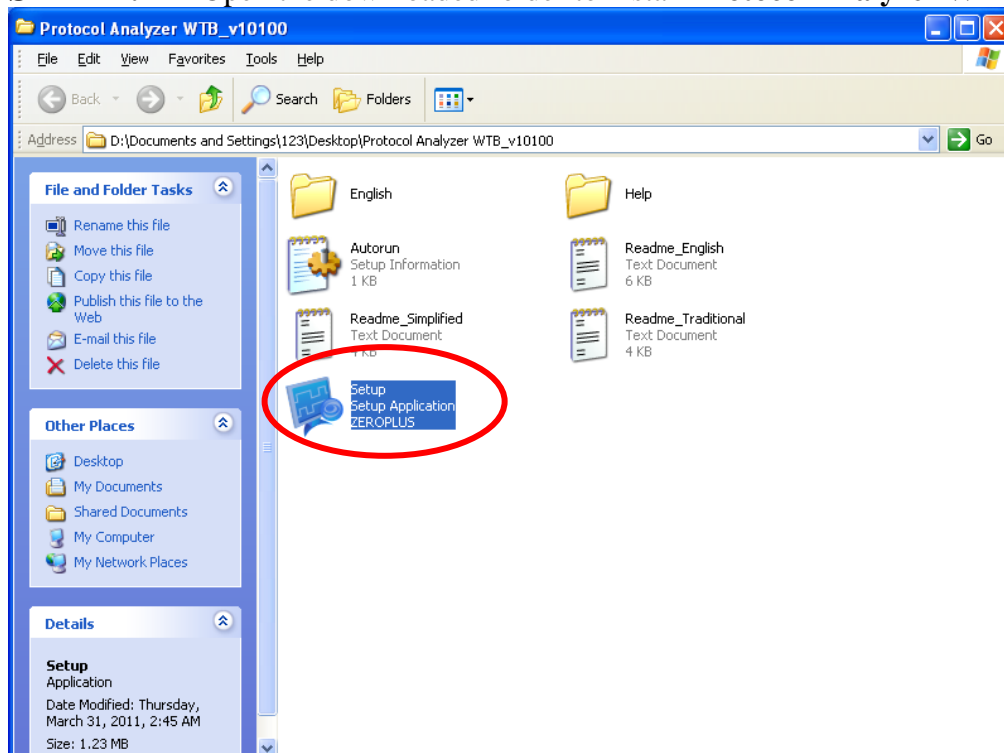
STEP 6. Click **Software** in the Products page. When the File Download dialog box appears, you can click **Save** button to save the compressed files.



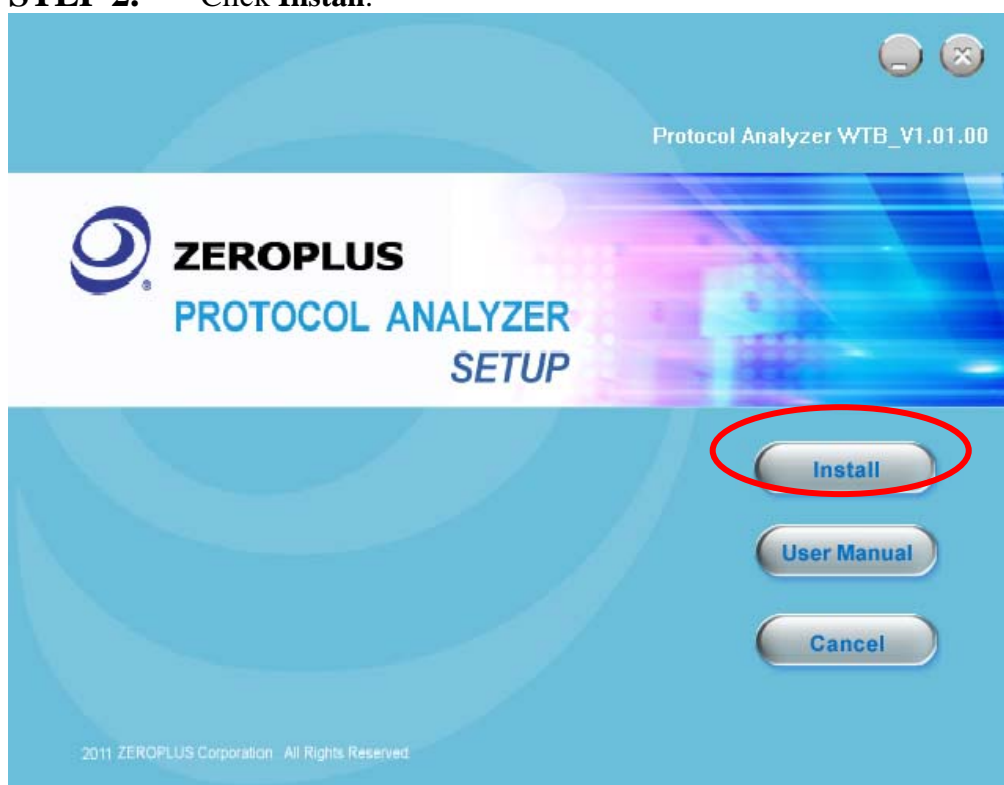


2 Software Installation

STEP 1. Open the downloaded folder to install **Protocol Analyzer WTB**.

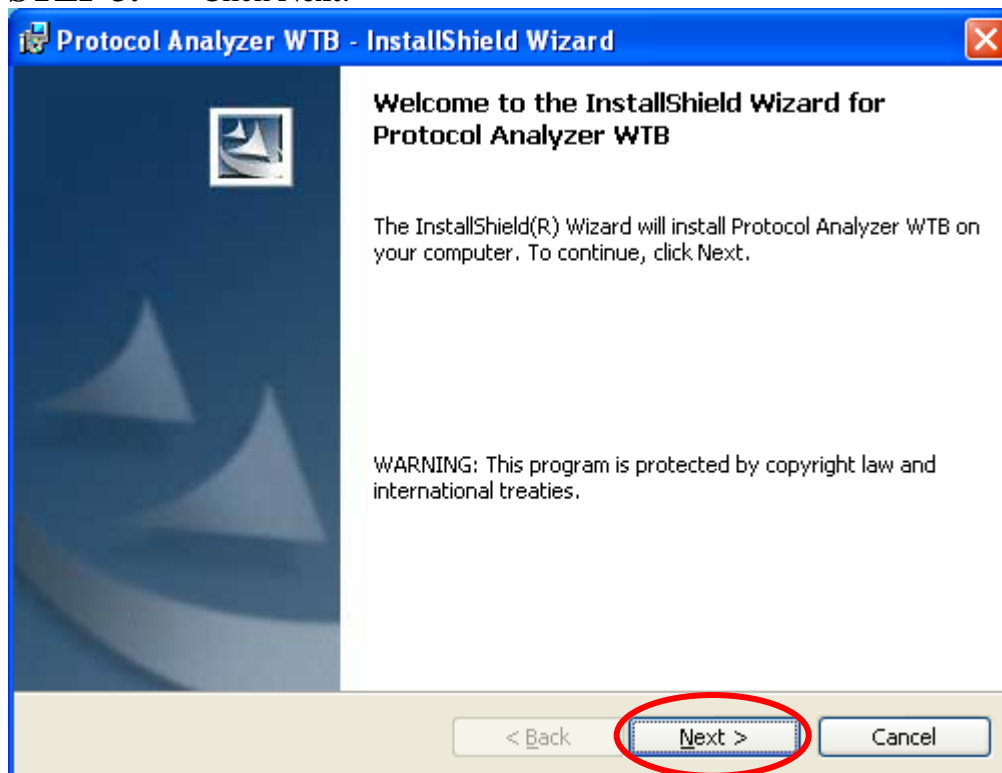


STEP 2. Click **Install**.

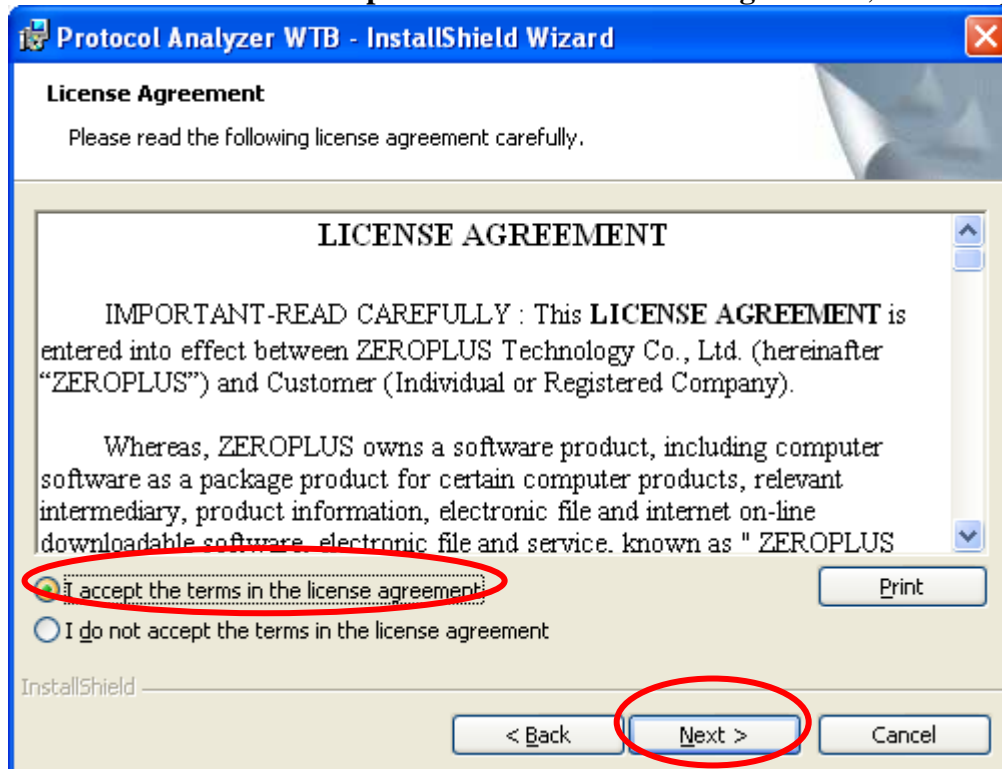




STEP 3. Click Next.



STEP 4. Select **I accept the terms in the license agreement**, and then press **Next**.





STEP 5. Fill in users' information in the below dialog box and click **Next**.

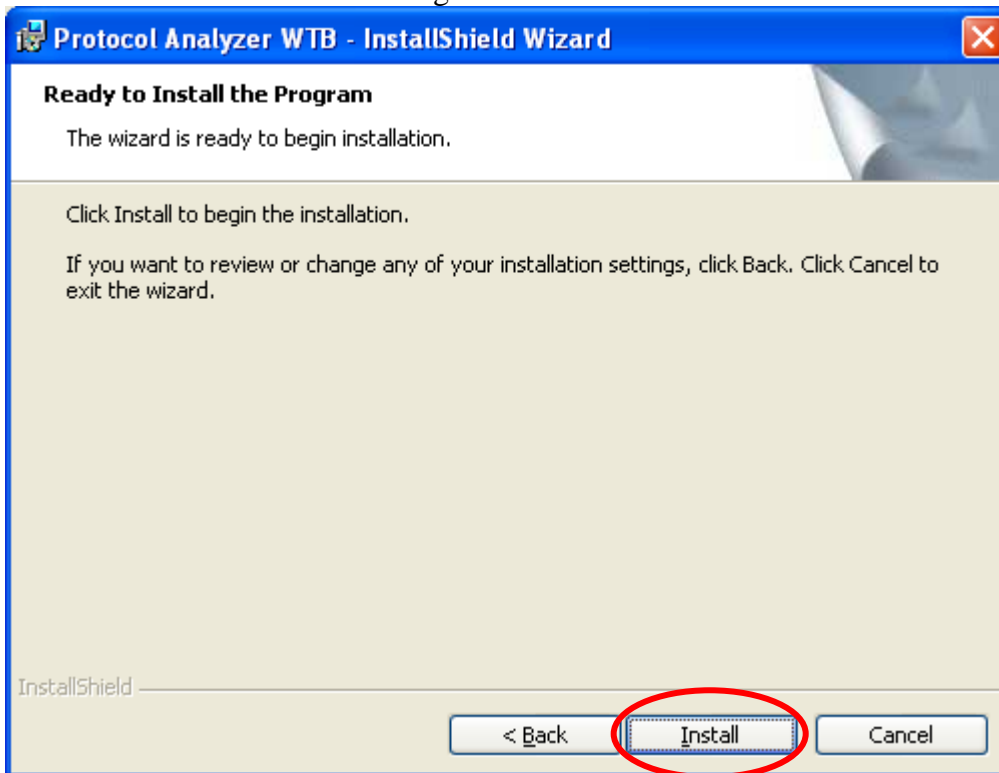
The dialog box is titled "Protocol Analyzer WTB - InstallShield Wizard". It has a blue header bar with a close button (X) on the right. The main area is titled "Customer Information" and contains the text "Please enter your information." Below this are two text input fields: "User Name:" with the text "kelly" and "Organization:" with the text "ZeroPlus". Below these fields are two radio button options: "Anyone who uses this computer (all users)" (selected) and "Only for me (kelly)". At the bottom, there is a status bar with the text "InstallShield" and three buttons: "< Back", "Next >" (circled in red), and "Cancel".

STEP 6. First, select **Complete** and then click **Next**.

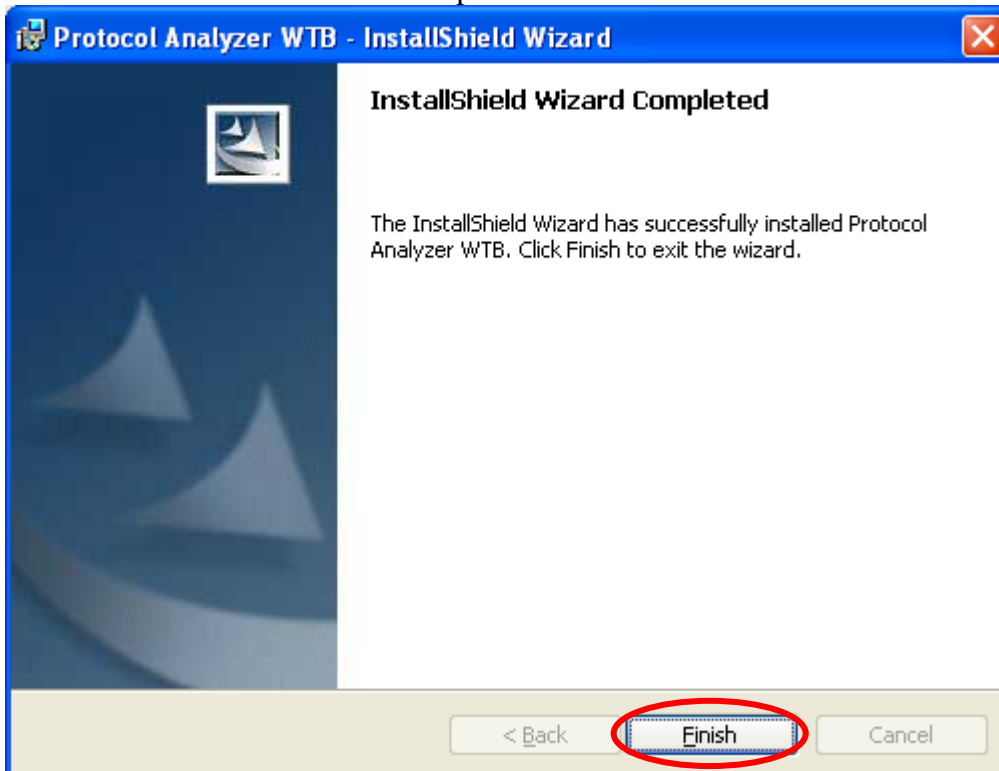
The dialog box is titled "Protocol Analyzer WTB - InstallShield Wizard". It has a blue header bar with a close button (X) on the right. The main area is titled "Setup Type" and contains the text "Choose the setup type that best suits your needs." Below this is the text "Please select a setup type." There are two radio button options: "Complete" (selected) and "Custom". The "Complete" option has a description: "All program features will be installed. (Requires the most disk space.)". The "Custom" option has a description: "Choose which program features you want installed and where they will be installed. Recommended for advanced users." At the bottom, there is a status bar with the text "InstallShield" and three buttons: "< Back", "Next >" (circled in red), and "Cancel".



STEP 7. Click **Install** to begin the installation.



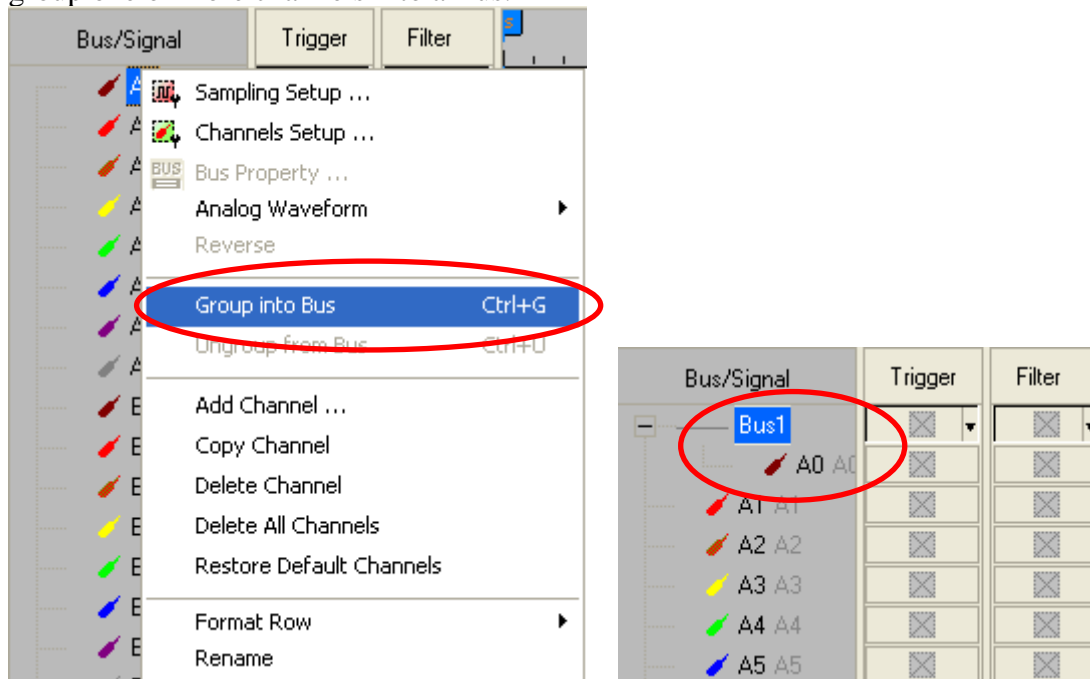
STEP 8. Click **Finish** to complete the installation



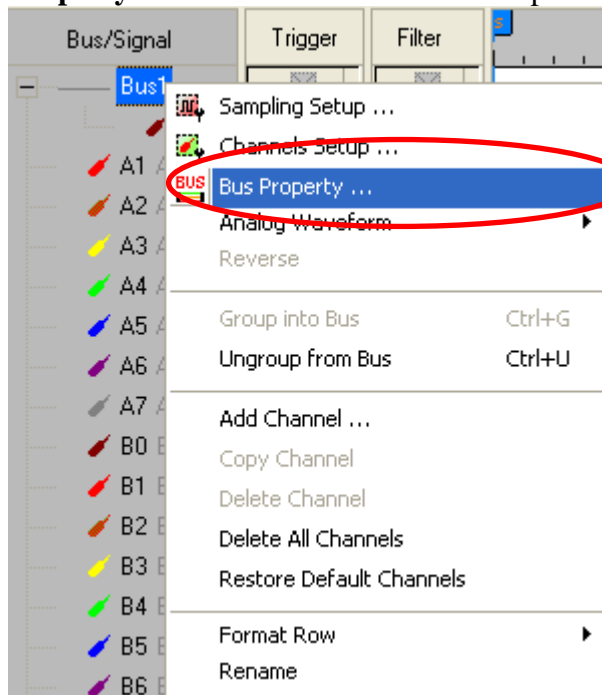


3 Software Register

STEP 1. Open the Logic Analyzer and group the unanalyzed channels into **Bus1** by pressing the **Right Key** on the mouse. **WTB** needs one or more channels to decode signals, so it is necessary to group one or more channels into a Bus.

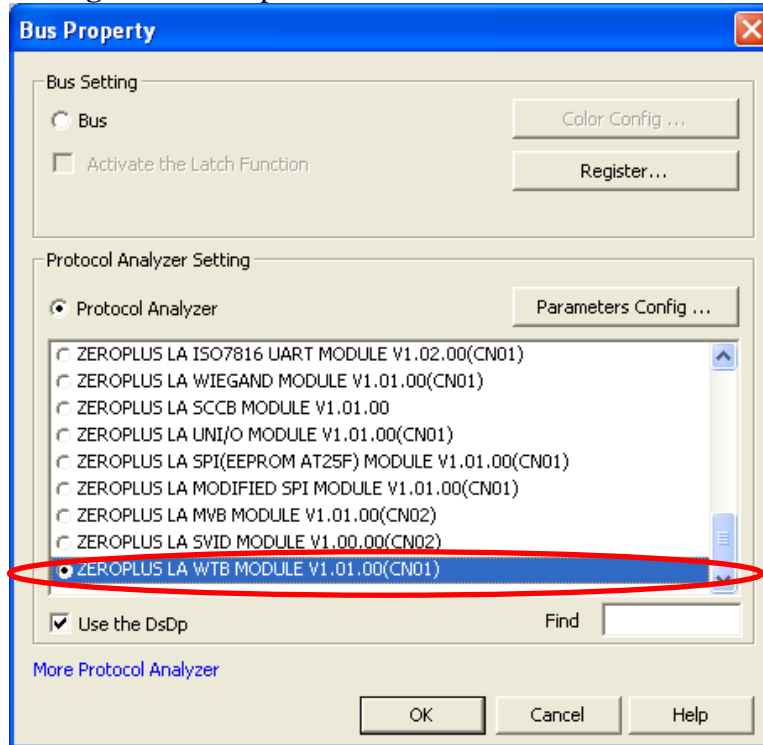


STEP 2. Select **Bus1**, and press **Right Key** on the mouse to list the menu, then press **Bus Property** or **Bus** icon on the toolbar to open **Bus Property** dialog box.

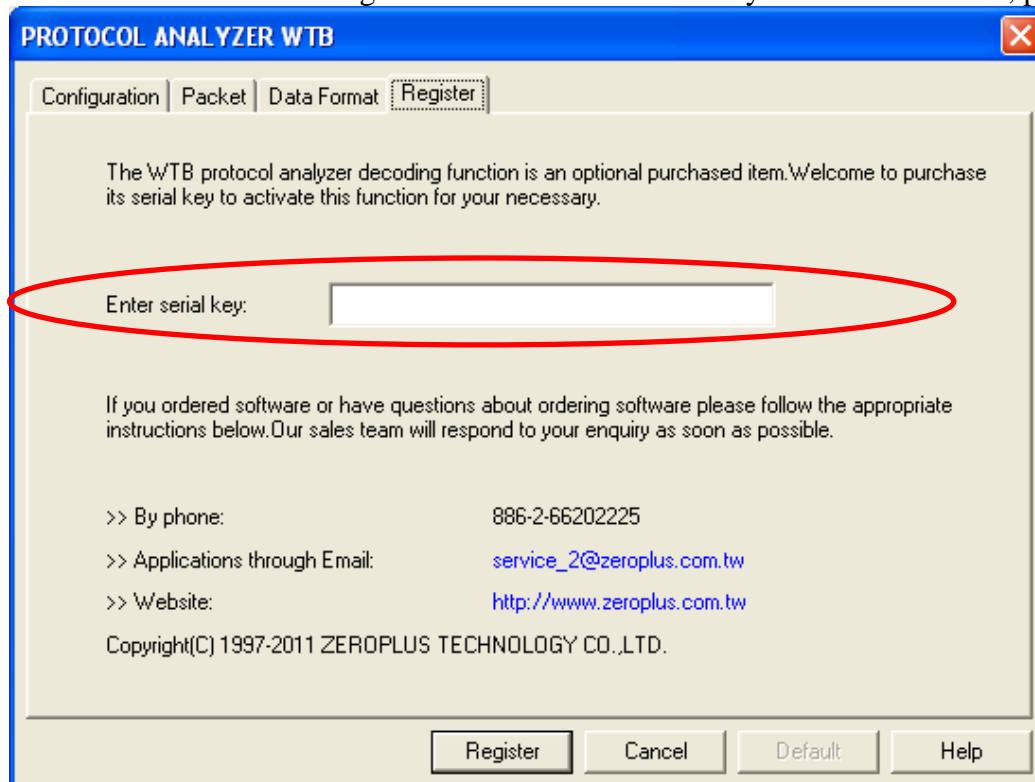




STEP 3. For Protocol Analyzer WTB Parameters Configuration, select Protocol Analyzer, and then choose **ZEROPLUS LA WTB MODULE V1.01.00(CN01)**. Next click **Parameters Configuration** to open the **PROTOCOL ANALYZER WTB** dialog box.

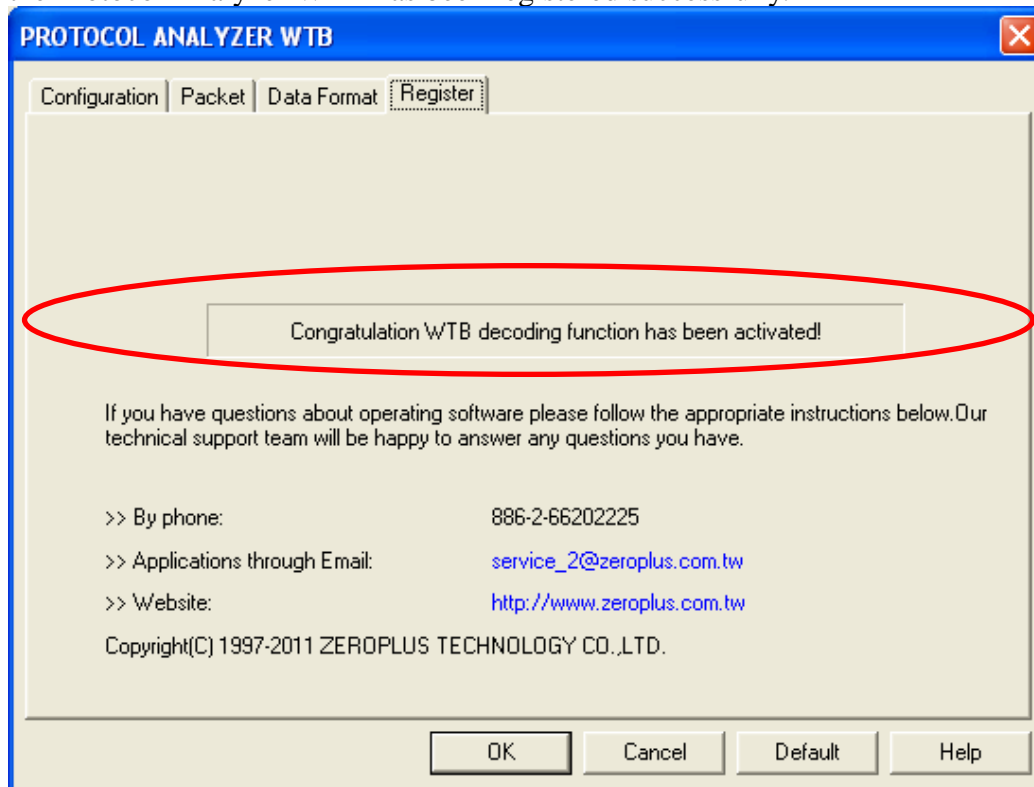


STEP 4. Press the Register tab to enter the serial key of the WTB. Then, press **Register**.





STEP 5. After pressing the Register button, the following dialog box will appear; it denotes that the Protocol Analyzer WTB has been registered successfully.

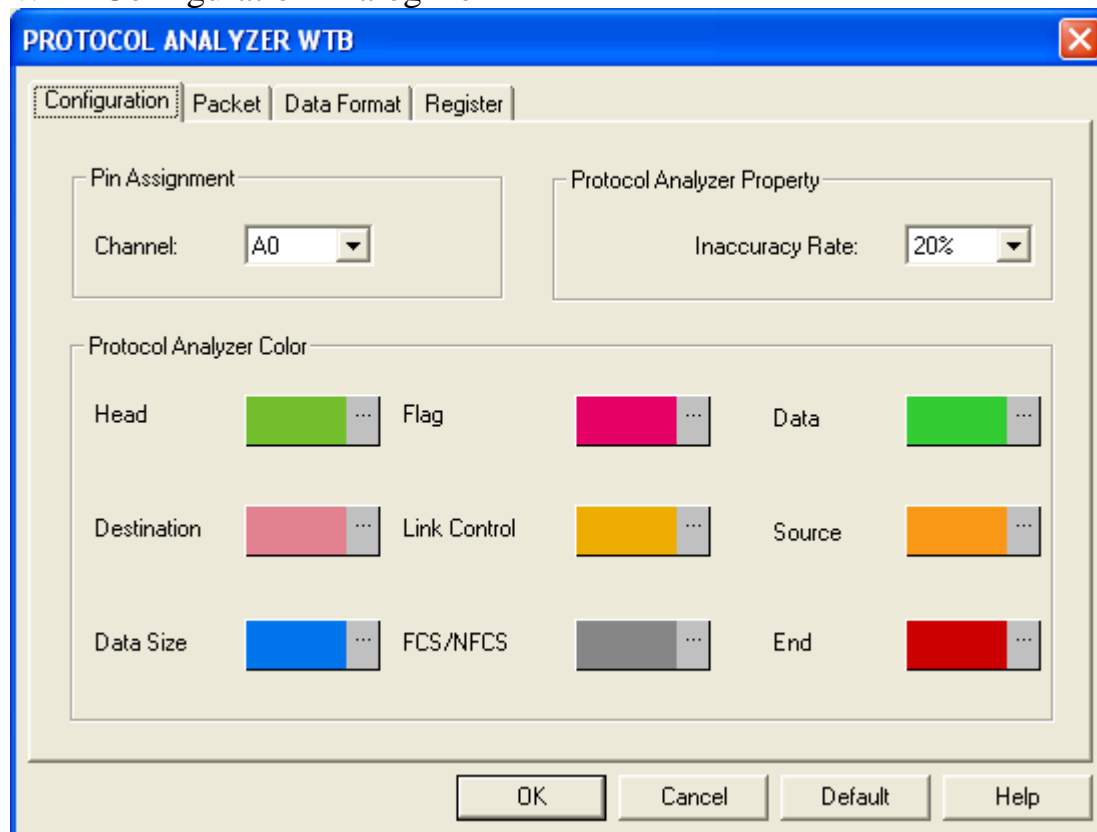




4 User Interface

In the configuration, please refer to the below images to select options of setting **WTB** module.

WTB Configuration Dialog Box



Pin Assignment:

WTB: It needs one channel to decode signals.

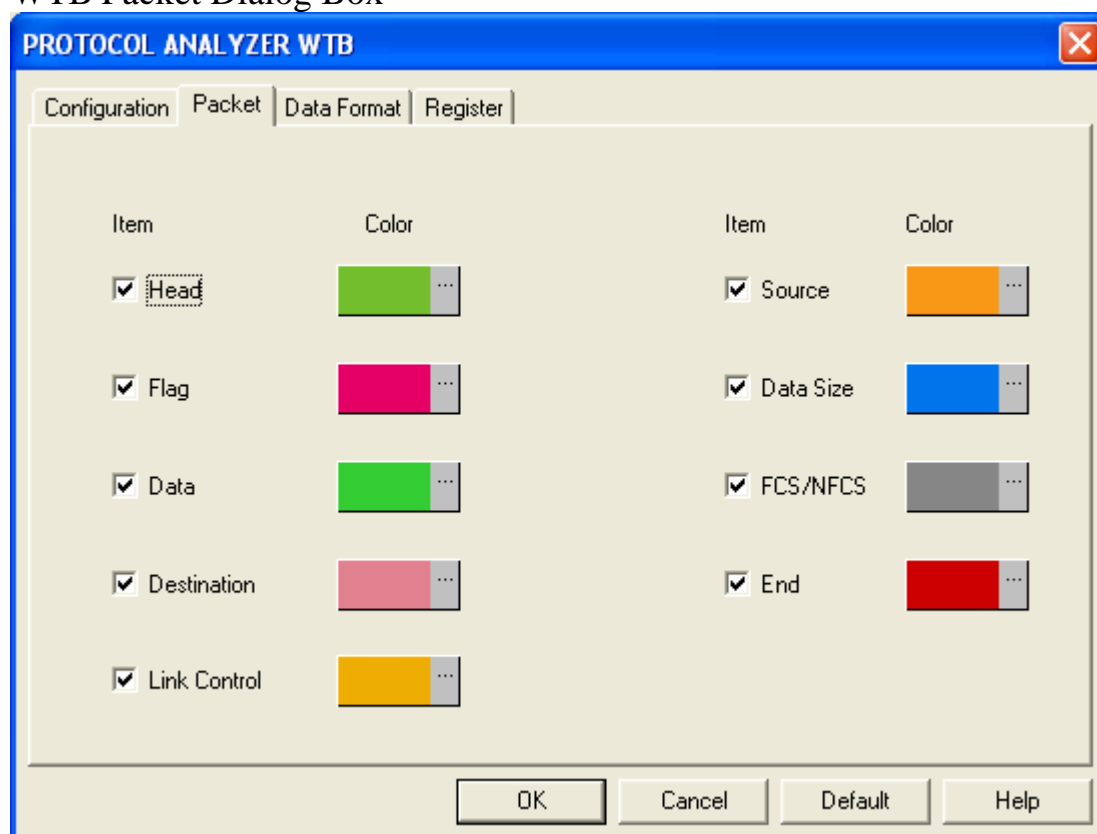
Protocol Analyzer Property:

Inaccuracy Rate: It is the Inaccuracy Rate for a bit Time Width; the default is 20%. Specifically, the standard Bit Width of WTB is 1us, and the 20% tolerance means that the Bit Width can be between 0.8us and 1.2us. Further, there are other three values to be selected from the pull-down menu, namely, 5%, 10%, 30%.

Protocol Analyzer Color: Set the displayed color for every packet in the Protocol Analyzer.

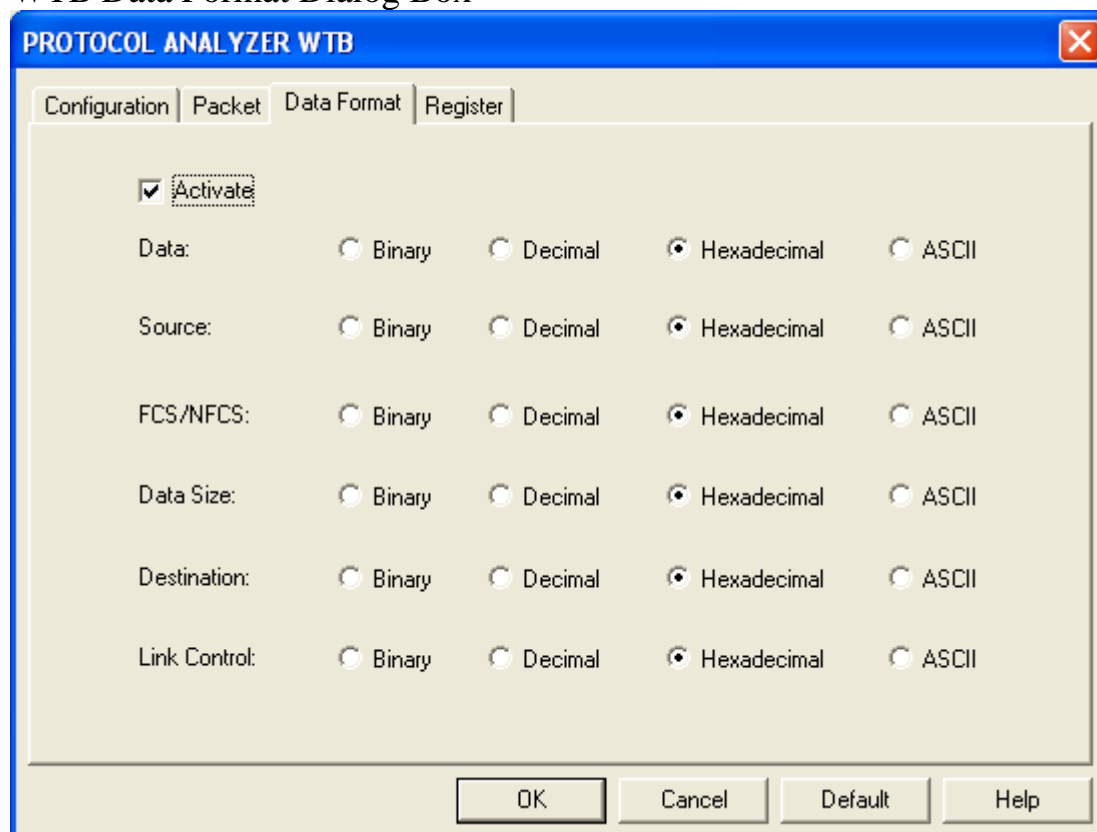


WTB Packet Dialog Box



In the Packet part, users can set the items and colors as users' requirements.

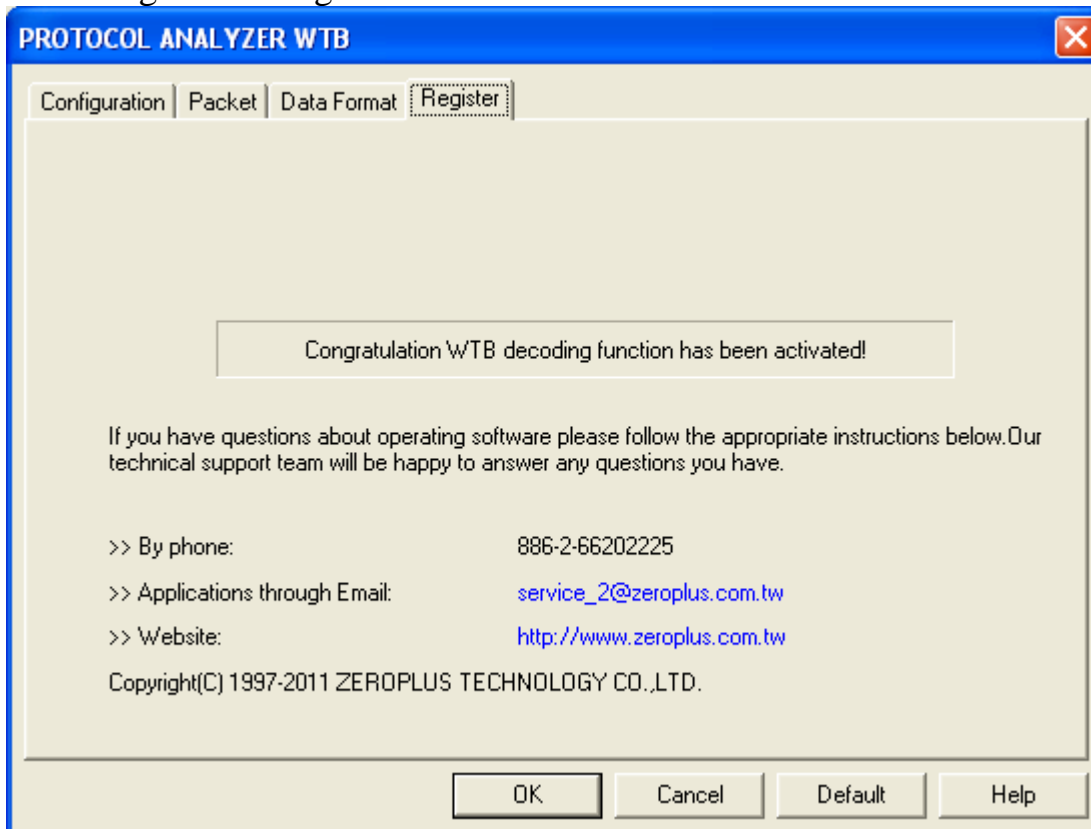
WTB Data Format Dialog Box





Users can set the Data Format of the Data, Source, FCS/NFCS, Data Size, Destination and Link Control as their requirements. When selecting the option, **Activate**, the data formats are decided by the settings in the Protocol Analyzer; when not selecting the option, **Activate**, the data formats are decided by the settings in the main program.

WTB Register Dialog Box

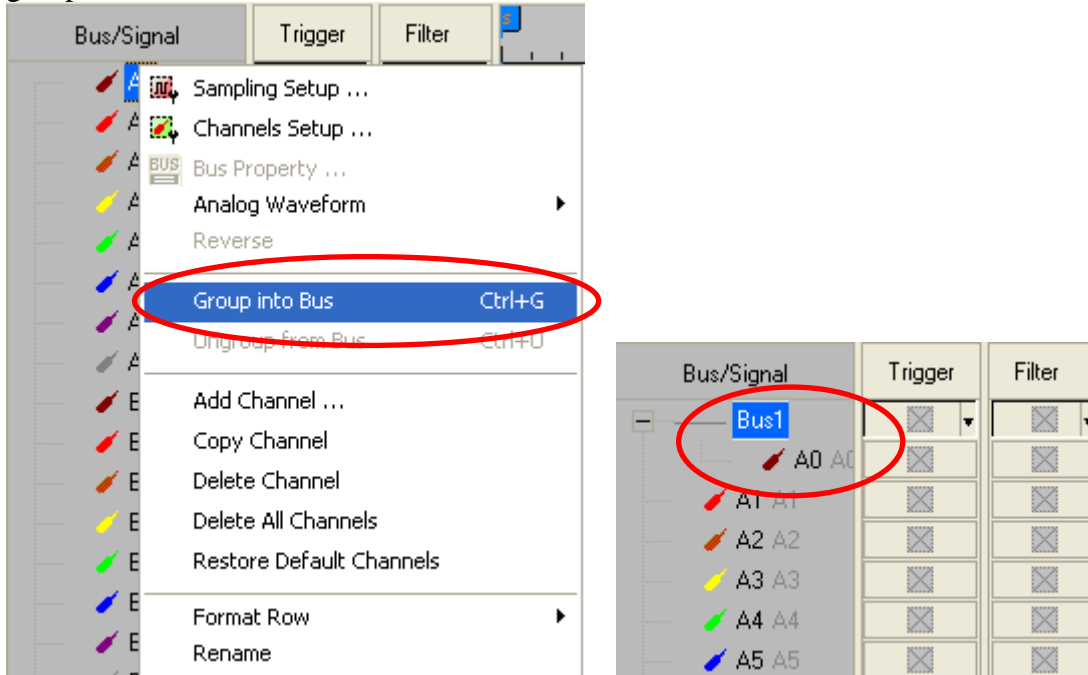


There is written ZeroPlus company information. If you have any questions about software operations, you can contact ZeroPlus by Telephone or Email.

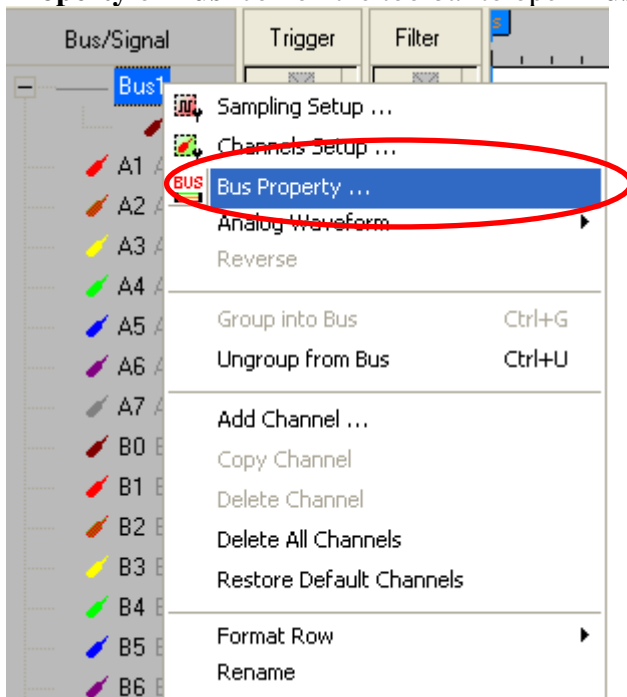


5 Operating Instructions

STEP 1. Open the Logic Analyzer and group the unanalyzed channels into **Bus1** by pressing the **Right Key** on the mouse. **WTB** needs one or more channels to decode signals, so it is necessary to group one or more channels into a Bus.

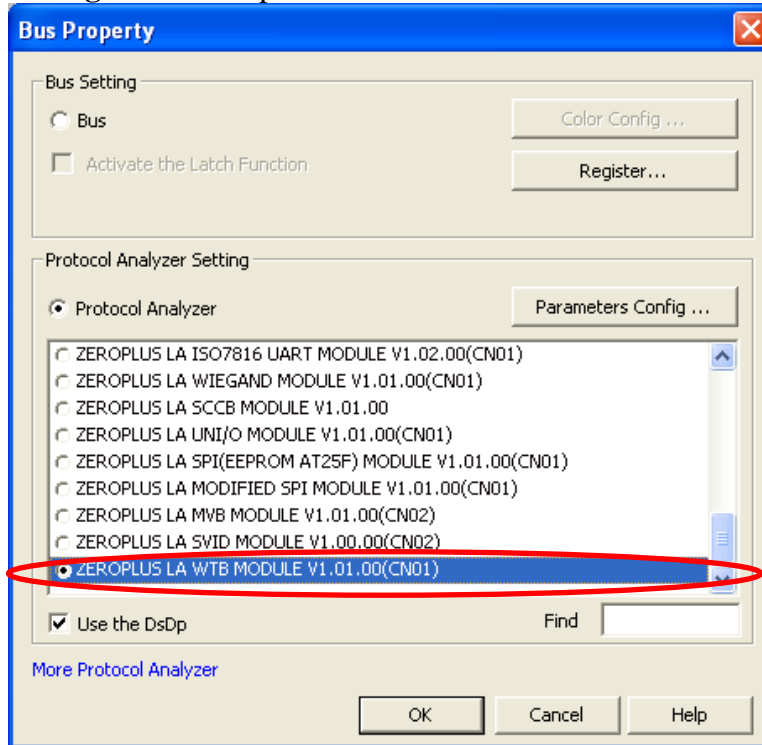


STEP 2. Select **Bus1**, and press **Right Key** on the mouse to list the menu, then press **Bus Property** or **Bus** icon on the toolbar to open **Bus Property** dialog box.

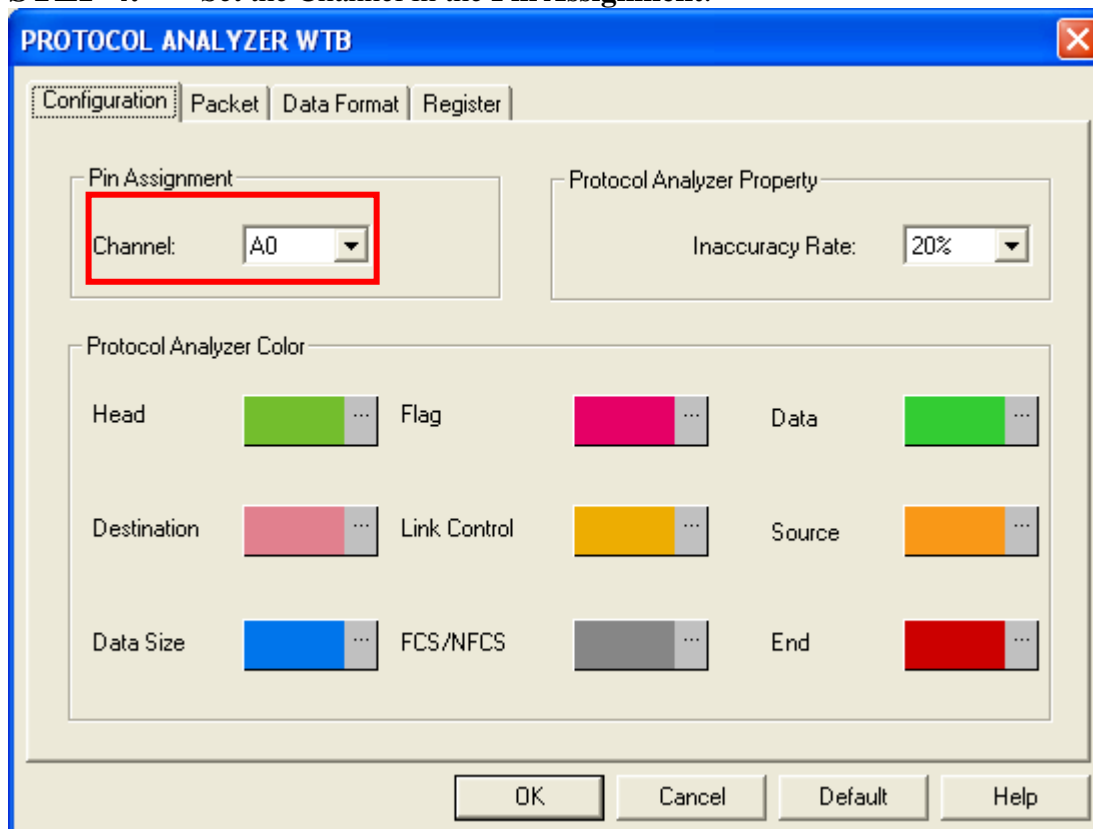




STEP 3. For Protocol Analyzer WTB Parameters Configuration, select Protocol Analyzer, and then choose **ZEROPLUS LA WTB MODULE V1.01.00(CN01)**. Next click **Parameters Configuration** to open the **PROTOCOL ANALYZER WTB** dialog box.

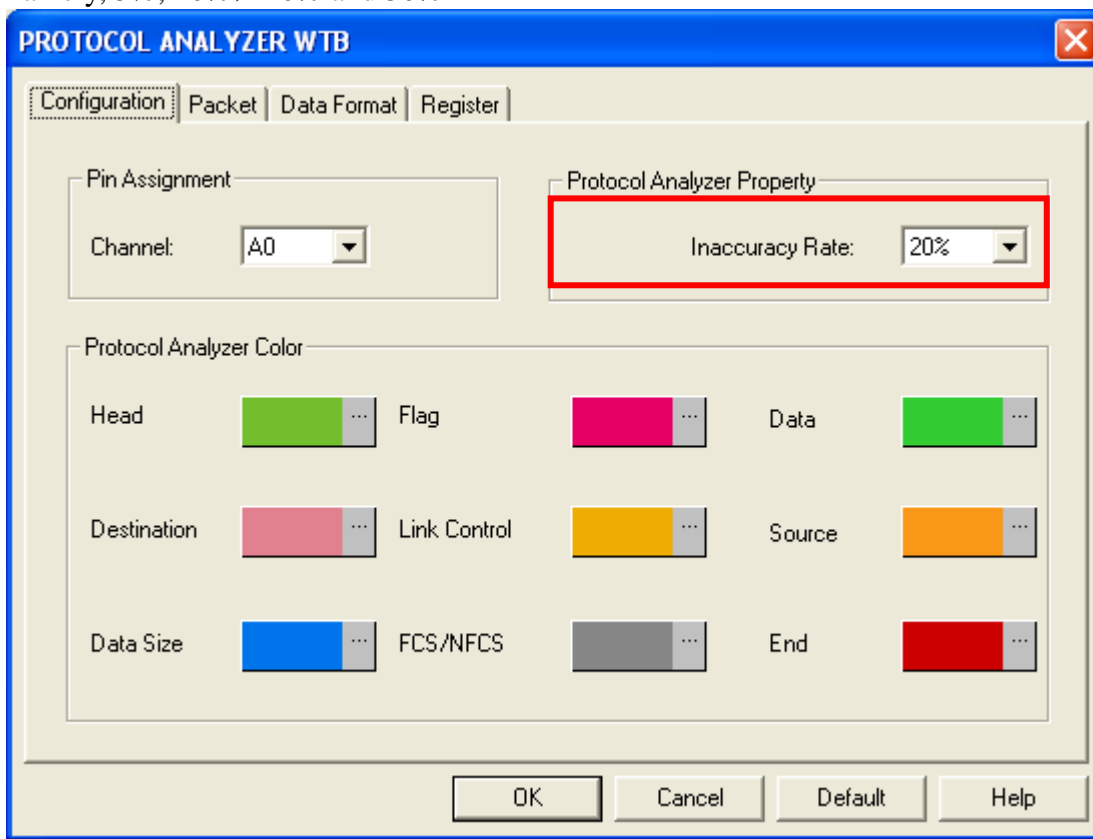


STEP 4. Set the Channel in the **Pin Assignment**.

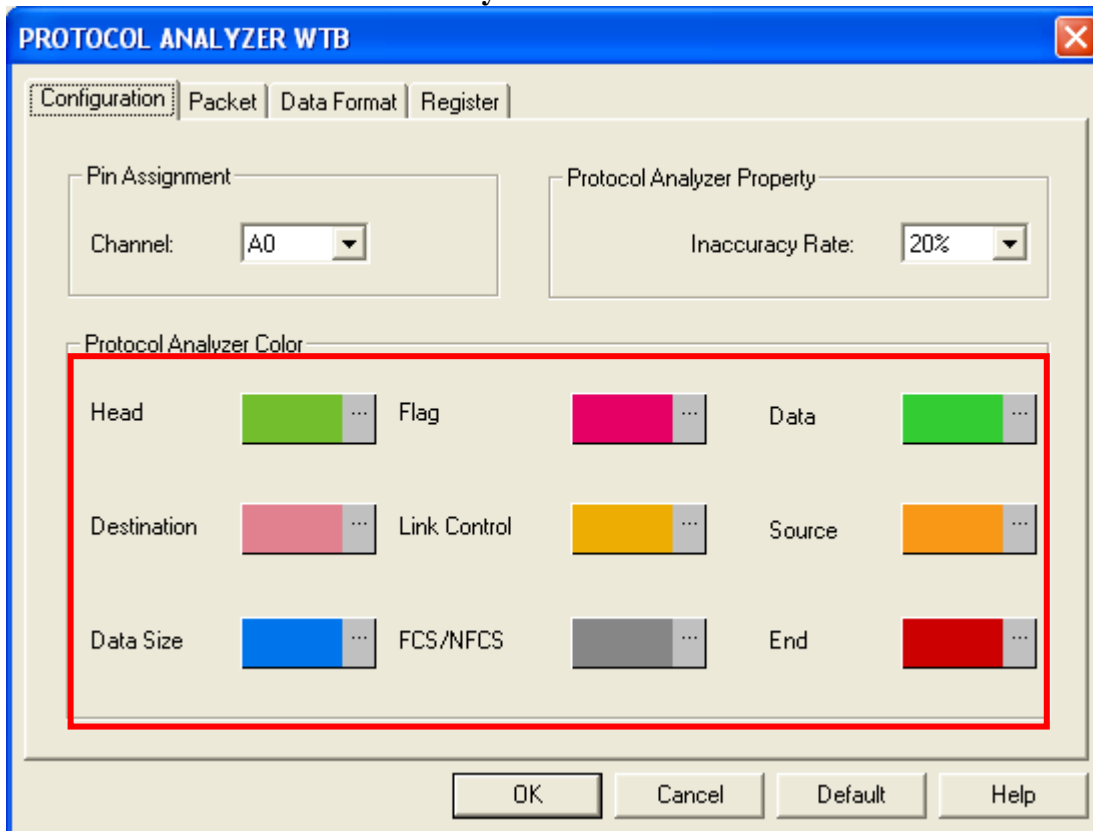




STEP 5. Set **Inaccuracy Rate**. There are four options to be selected from pull-down menu, namely, 5%, 10%, 20% and 30%



STEP 6. Set the **Protocol Analyzer Color**.



Protocol Analyzer Decoding

